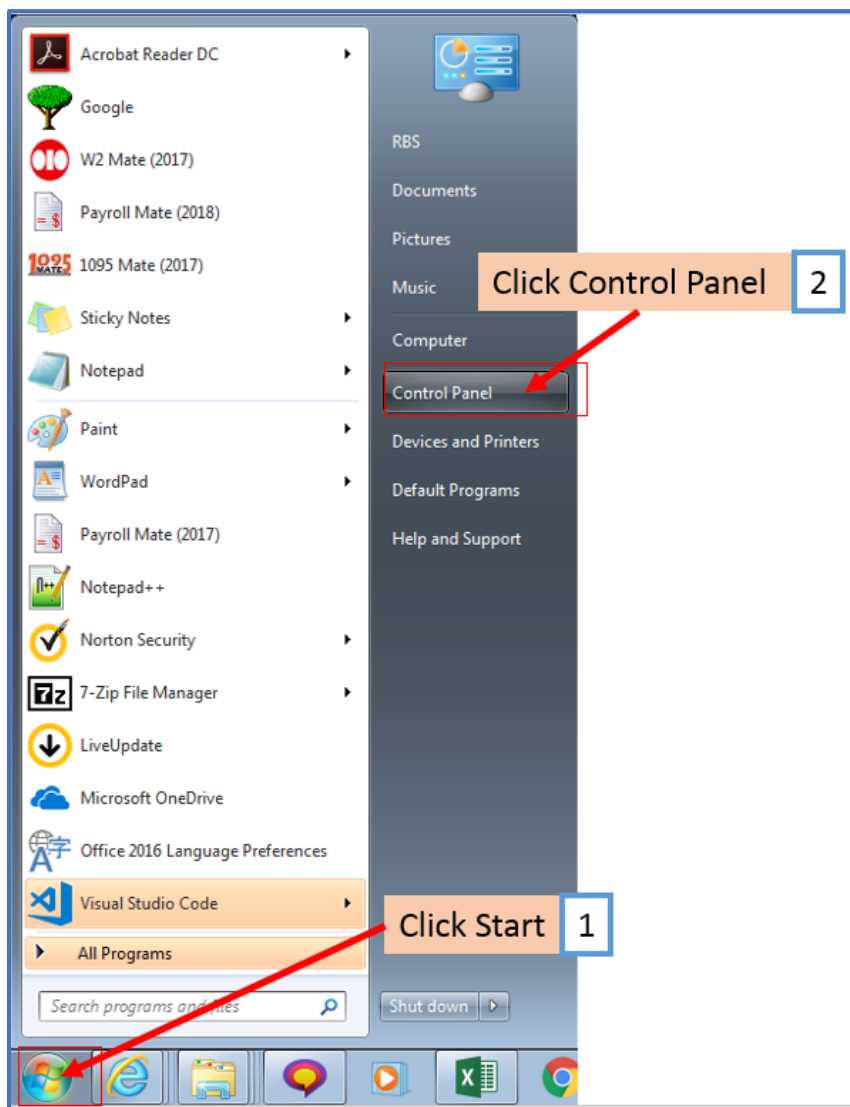


# How to Adjust Text Size in Payroll Mate

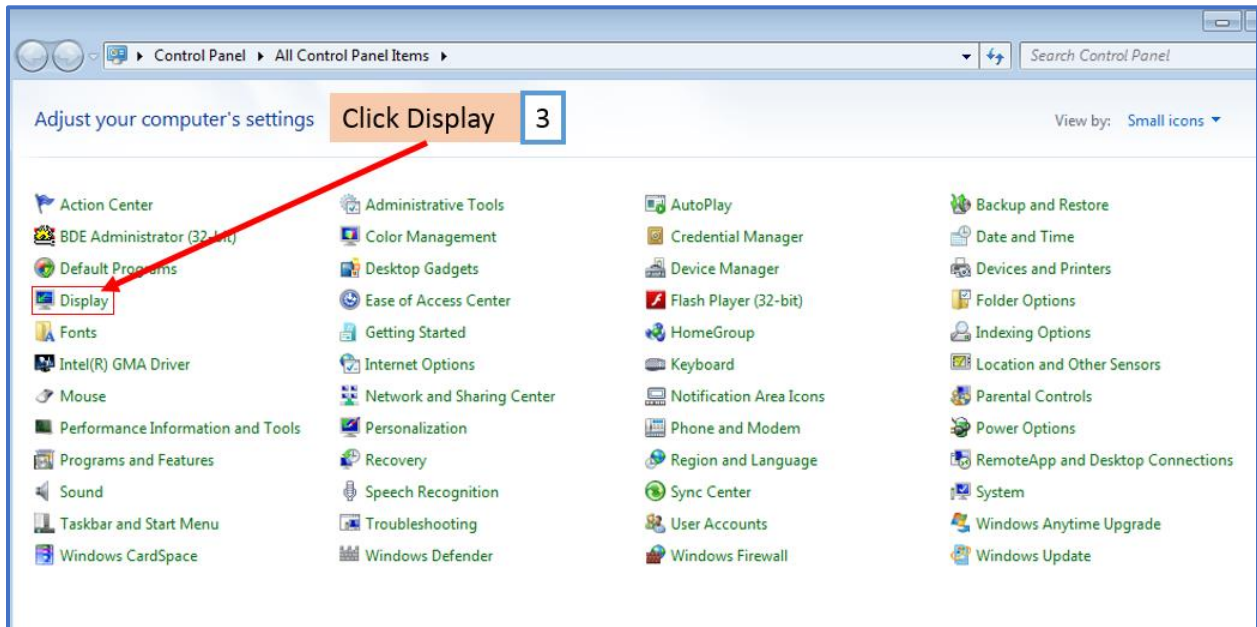
Payroll Mate is best viewed using the default text size of 100%. If your text settings are larger, you may notice text is cut off while inside Payroll Mate. To adjust the text size follow these directions.

## Windows 7

1. Click the Start menu
2. Click Control Panel



### 3. Select Display

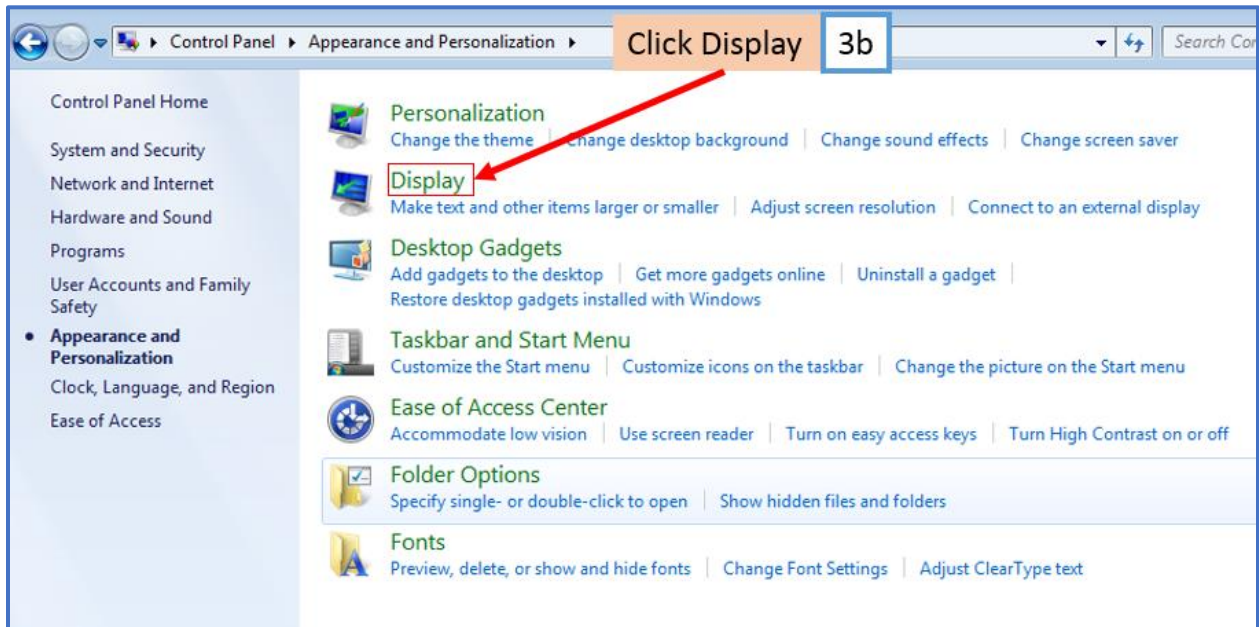


If you don't see the Display option:

### 3a. Click Appearance and Personalization



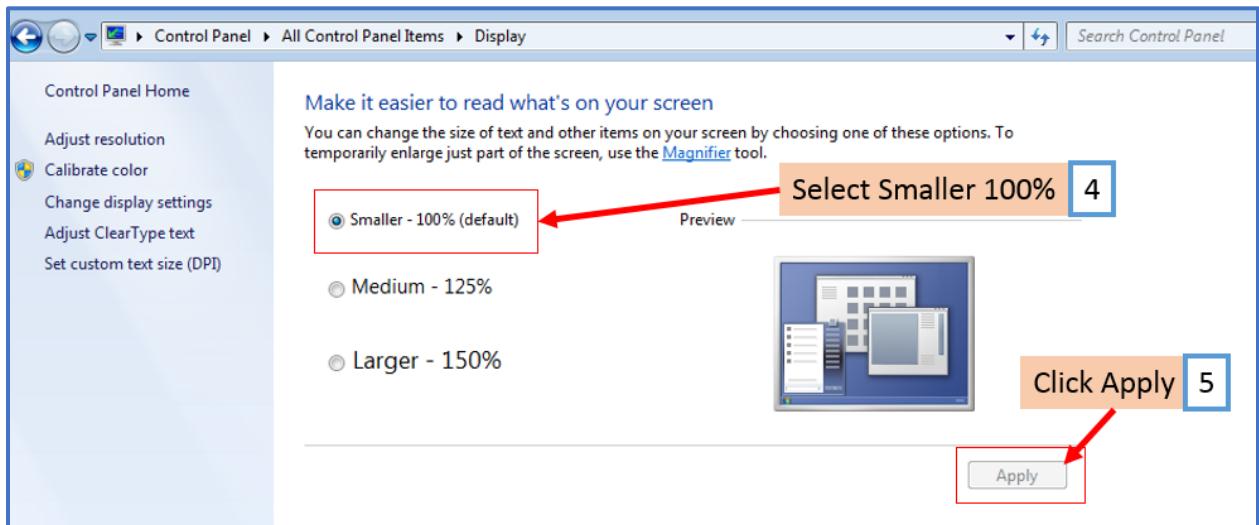
### 3b. Click Display



### 4. Select Smaller – 100% (default)

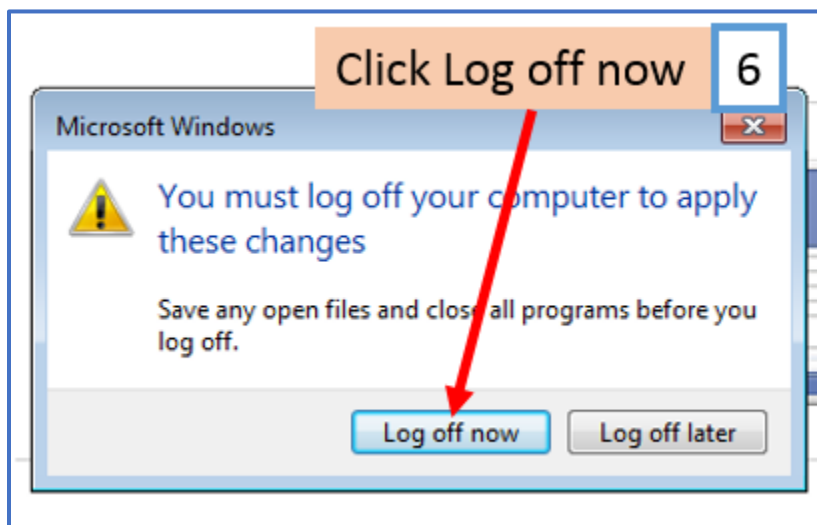
Note: This will decrease the size of all Windows elements, including icons

### 5. Click Apply



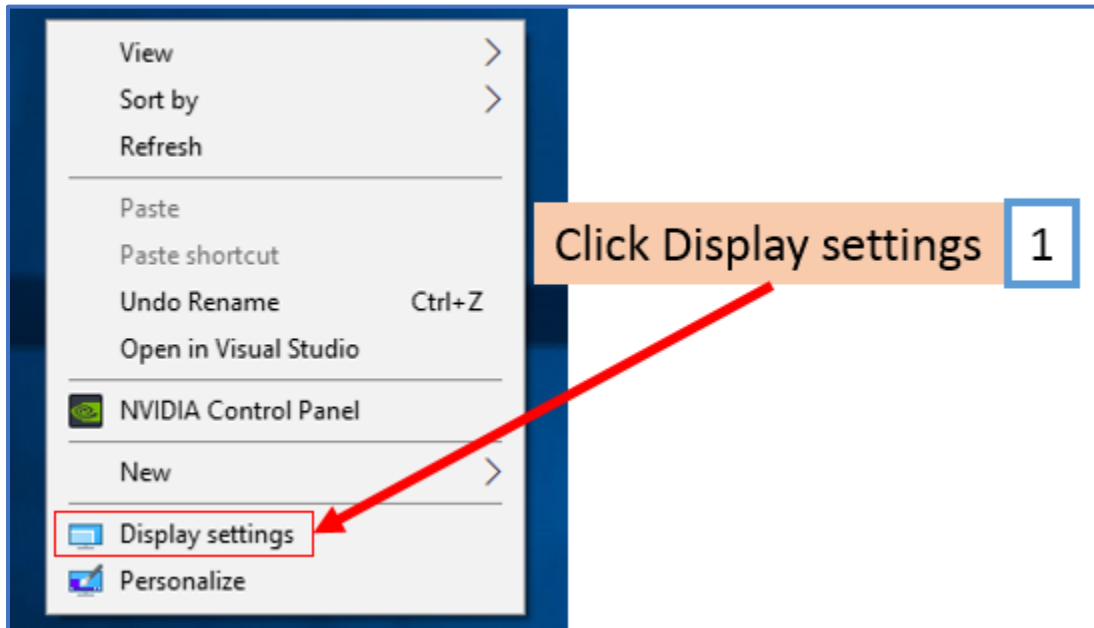
6. Click Log off now

Note: Windows 7 changes won't take effect until you log off and log back in



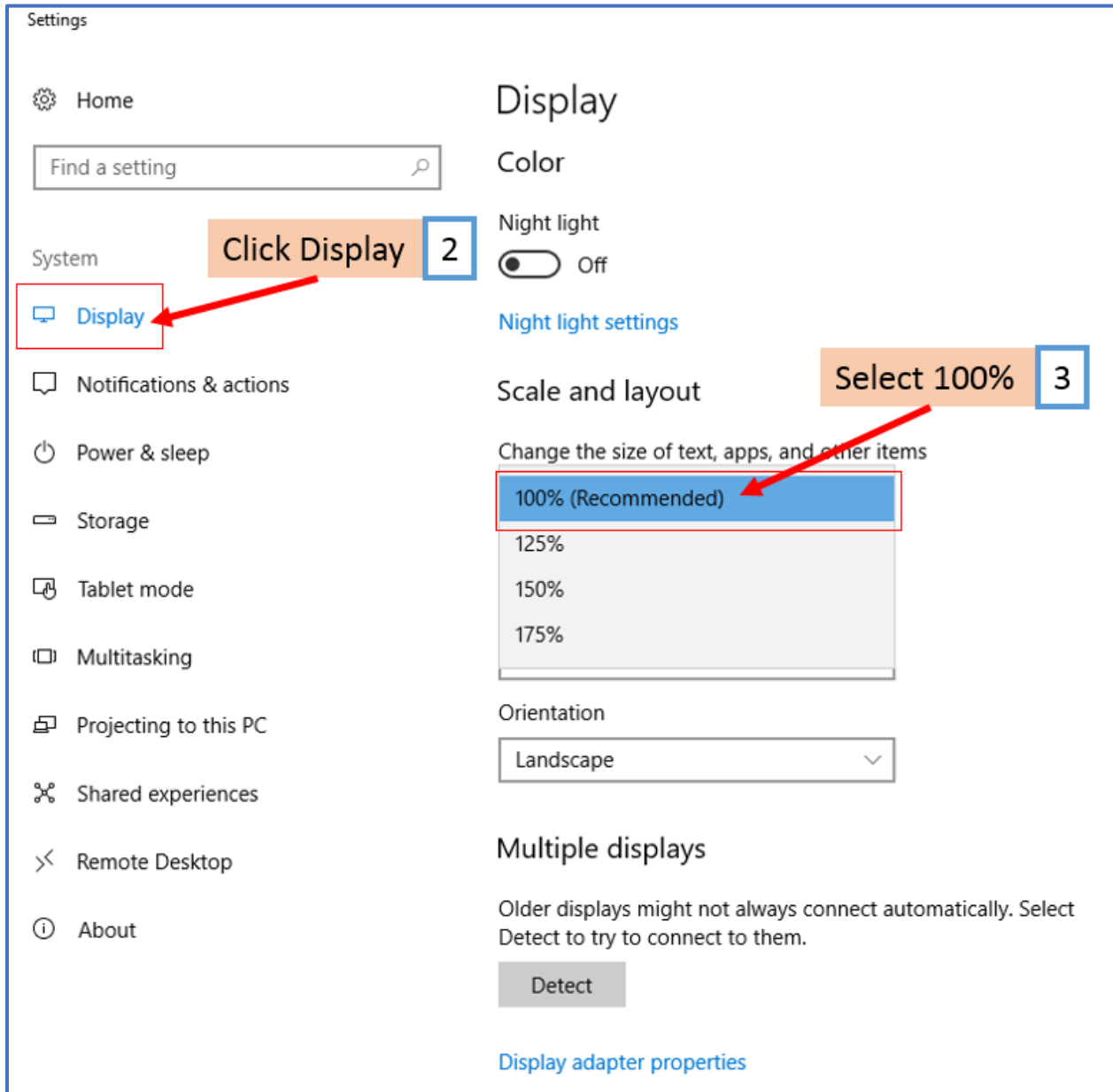
## Windows 10

1. Right-Click on your desktop and select Display settings from the menu



2. Click Display

3. Select 100% for size of text, apps and other items



Close out of the Display settings using the X in the top right corner  
Windows 10 will update your setting automatically