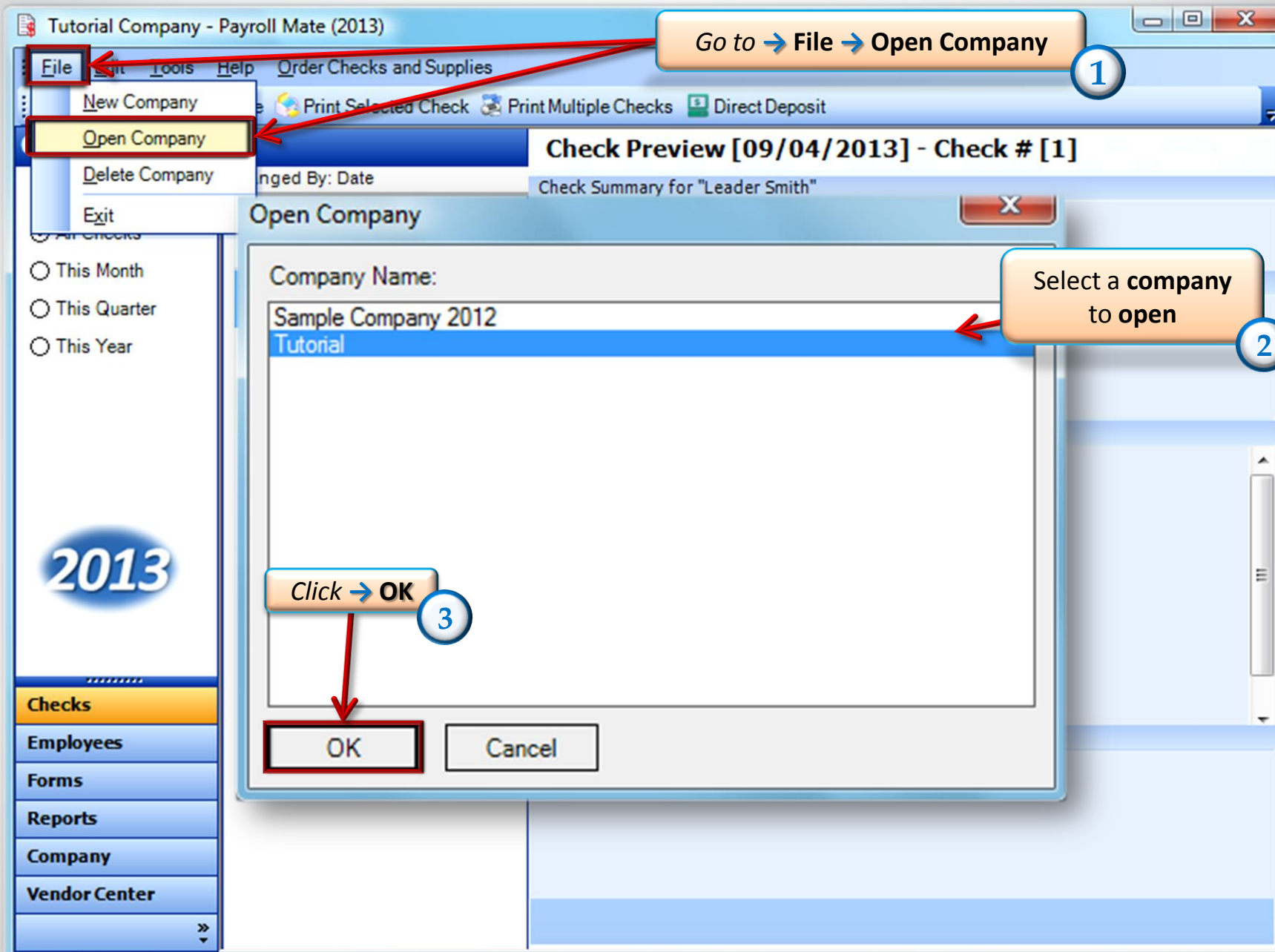


How to Enter Rates for State Unemployment and State Disability in Payroll Mate®

Start by Opening your
Payroll Mate
Program





Tutorial Company - Payroll Mate (2013)

File Edit Tools Help Order Checks and Supplies

Company

General Information | **Federal Tax Information** | **State Tax Information**

Income Categories | **Tax Categories** | **Deduction Categories**

State ID: 1364613648

State Unemployment Account Number: 7463453665

State Unemployment Tax Rate (1st Quarter): 1.000000

State Unemployment Tax Rate (2nd Quarter): 1.000000

State Unemployment Tax Rate (3rd Quarter): 1.000000

State Unemployment Tax Rate (4th Quarter): 1.000000

State Unemployment Tax Wage Base: 7000.00

First Fiscal Month: January

☒ Round State Income Tax to the Nearest Dollar

☒ Hide Employees Social Security Numbers in Printed Paystubs and Direct Deposit Files

State Disability Insurance (Employee) Rate: 2.000000

State Disability Insurance (Employee) Wage Base: 7000.00

State Disability Insurance (Employer) Rate: 2.000000

State Disability Insurance (Employer) Wage Base: 7000.00

Update

Example: for 1.5% enter 1.5 in this box

Go to → Company 4

Click → State Tax Information 5

2013

Checks

Employees

Forms

Reports

Company

Vendor Center

If you don't know your State ID, State unemployment tax rates or State Disability tax rates contact your State Revenue Department

2013

Checks

Employees

Forms

Reports

Company

Vendor Center

General Information

Income Categories

Federal Tax Information

Tax Categories

State Tax Information

Deduction Categories

State ID:	<input type="text" value="1364613648"/>	
State Unemployment Account Number:	<input type="text" value="7463453665"/>	
State Unemployment Tax Rate (1st Quarter):	<input type="text" value="1.000000"/>	Example: for 1.5% enter 1.5 in this box
State Unemployment Tax Rate (2nd Quarter):	<input type="text" value="1.000000"/>	
State Unemployment Tax Rate (3rd Quarter):	<input type="text" value="1.000000"/>	
State Unemployment Tax Rate (4th Quarter):	<input type="text" value="1.000000"/>	
State Unemployment Tax Wage Base:	<input type="text" value="7000.00"/>	
First Fiscal Month:	<input type="text" value="January"/>	
<input checked="" type="checkbox"/> Round State Income Tax to the Nearest Dollar		
<input checked="" type="checkbox"/> Hide Employees Social Security Numbers in Printed Paystubs and Direct Deposit Files		

State Disability Insurance (Employee) Rate	<input type="text" value="2.000000"/>
State Disability Insurance (Employee) Wage Base	<input type="text" value="7000.00"/>
State Disability Insurance (Employer) Rate	<input type="text" value="2.000000"/>
State Disability Insurance (Employer) Wage Base	<input type="text" value="7000.00"/>

Fill in
**State Tax
Information**

6

Company

2013

Checks

Employees

Forms

Reports

Company

Vendor Center

General Information

Income Categories

Federal Tax Information

Tax Categories

State Tax Information

Deduction Categories

State ID:	<input type="text" value="1364613648"/>	
State Unemployment Account Number:	<input type="text" value="7463453665"/>	
State Unemployment Tax Rate (1st Quarter):	<input type="text" value="1.000000"/>	Example: for 1.5% enter 1.5 in this box
State Unemployment Tax Rate (2nd Quarter):	<input type="text" value="1.000000"/>	
State Unemployment Tax Rate (3rd Quarter):	<input type="text" value="1.000000"/>	
State Unemployment Tax Rate (4th Quarter):	<input type="text" value="1.000000"/>	
State Unemployment Tax Wage Base:	<input type="text" value="7000.00"/>	
First Fiscal Month:	<input type="text" value="January"/>	
<input checked="" type="checkbox"/> Round State Income Tax to the Nearest Dollar		
<input checked="" type="checkbox"/> Hide Employees Social Security Numbers in Printed Paystubs and Direct Deposit Files		

State Disability Insurance (Employee) Rate	<input type="text" value="2.000000"/>
State Disability Insurance (Employee) Wage Base	<input type="text" value="7000.00"/>
State Disability Insurance (Employer) Rate	<input type="text" value="2.000000"/>
State Disability Insurance (Employer) Wage Base	<input type="text" value="7000.00"/>

Click → Update

7

Update



Congratulations. The unemployment rates have been set up!

www.PayrollMate.com

1-800-507-1992