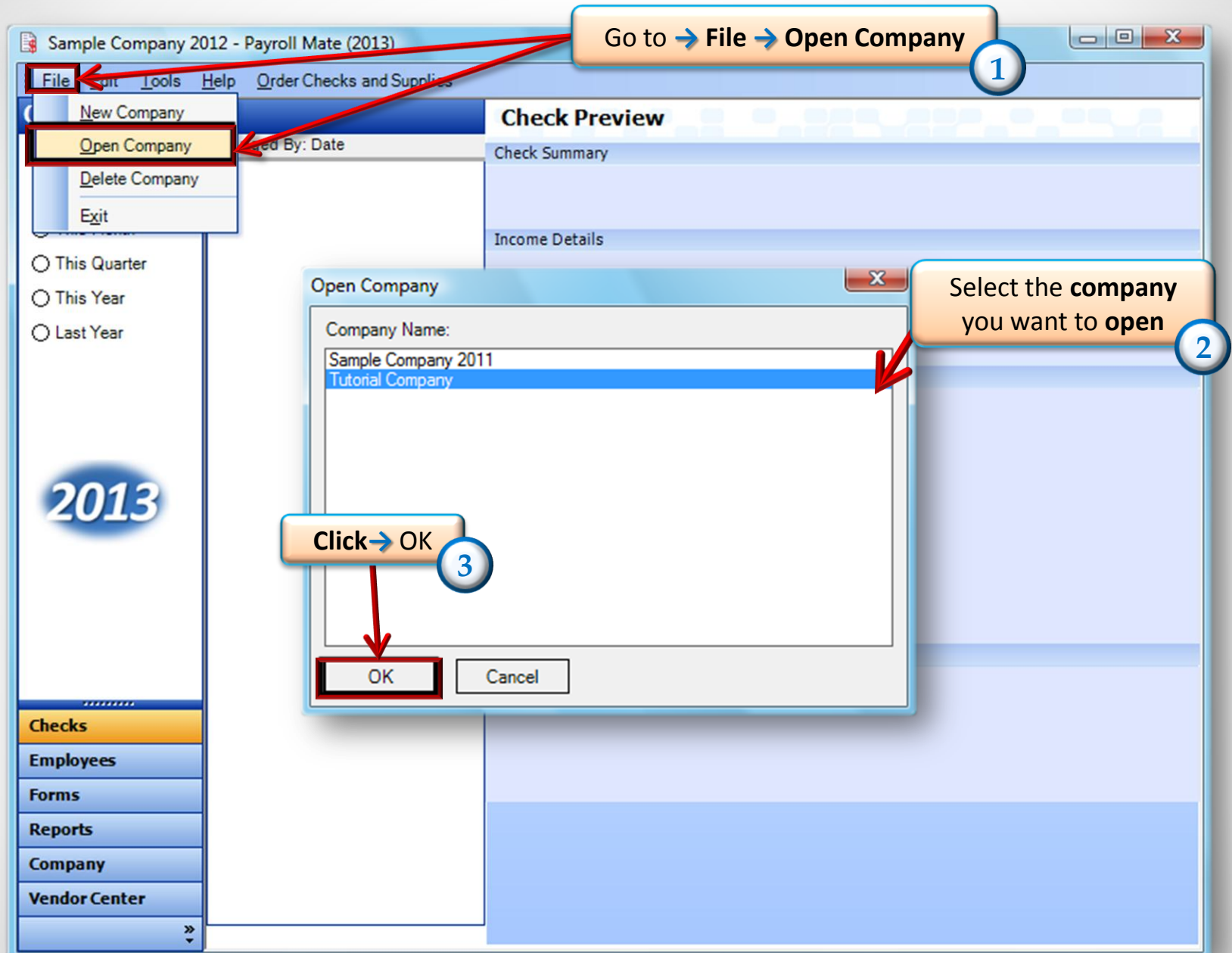
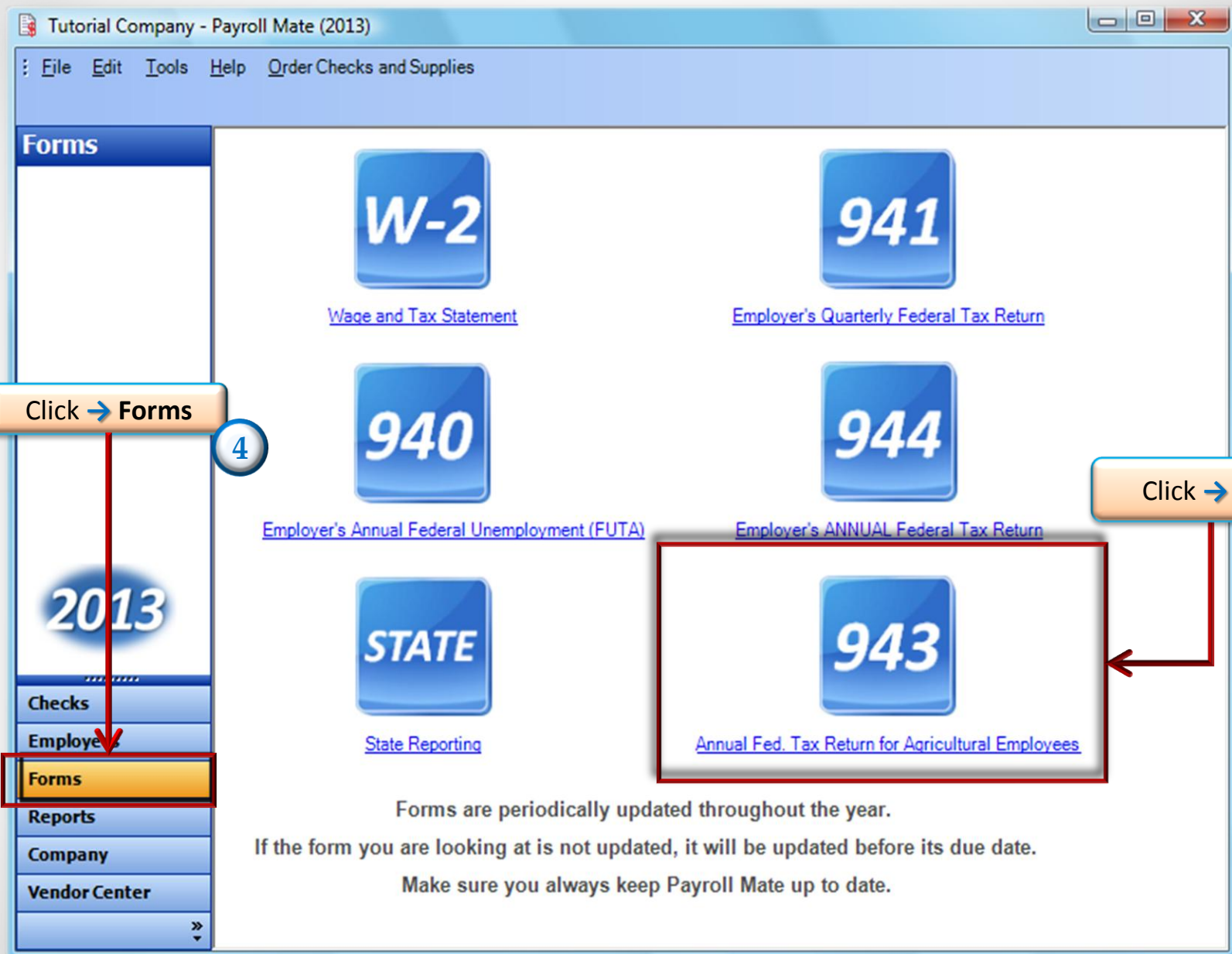


How to Print Form 943 in Payroll Mate®

Start by Opening your
Payroll Mate
Program







Tutorial Company - Payroll Mate (2013)

File Edit Tools Help Order Checks and Supplies

Forms

[Choose another Federal Form](#)

Form 943

Edit Preparer Info **Preview** **Print** Override Calculations

Click → **Print**

Click → **Preview** to review the form

2013

1 Agricultural employees employed in the pay period that includes March 12, 2013 1 2

2 subject to social security tax 2 3229.00

3 Social security tax (multiply line 2 by 12.4% (.124)) 3 400.40
(Changed to 12.4% in 2013)

4 Total wages subject to Medicare tax 4 3229.00

5 Medicare tax (multiply line 4 by 2.9% (.029)) 5 93.64

6 Total wages subject to Additional Medicare Tax withholding 6 0.00

7 Additional Medicare Tax withholding (multiply line 6 by 0.9% (.009)) 7 0.00

8 Federal income tax withheld 8 327.00

9 Total taxes before adjustments. Add lines 3, 5, 7, and 8 9 821.04

10 Current year's adjustments 10 -0.02

11 Total taxes after adjustments (line 9 as adjusted by line 10) 11 821.02



Congratulations. Form 943 has been printed!

www.PayrollMate.com

1-800-507-1992